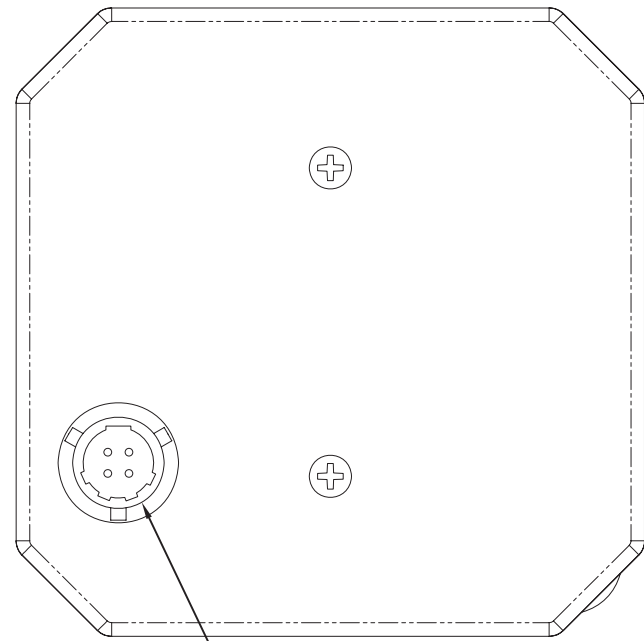


| Configuration |           |           |               |                  |
|---------------|-----------|-----------|---------------|------------------|
| Dash #        | DG Assy   | Nameplate | Options Decal | Hole Cover Decal |
| -10           | 9016455-2 | 9016465-1 | omit          | omit             |
| -11           | 9016455-1 | 9016465-2 | 9016157-2     | 8017212-1        |

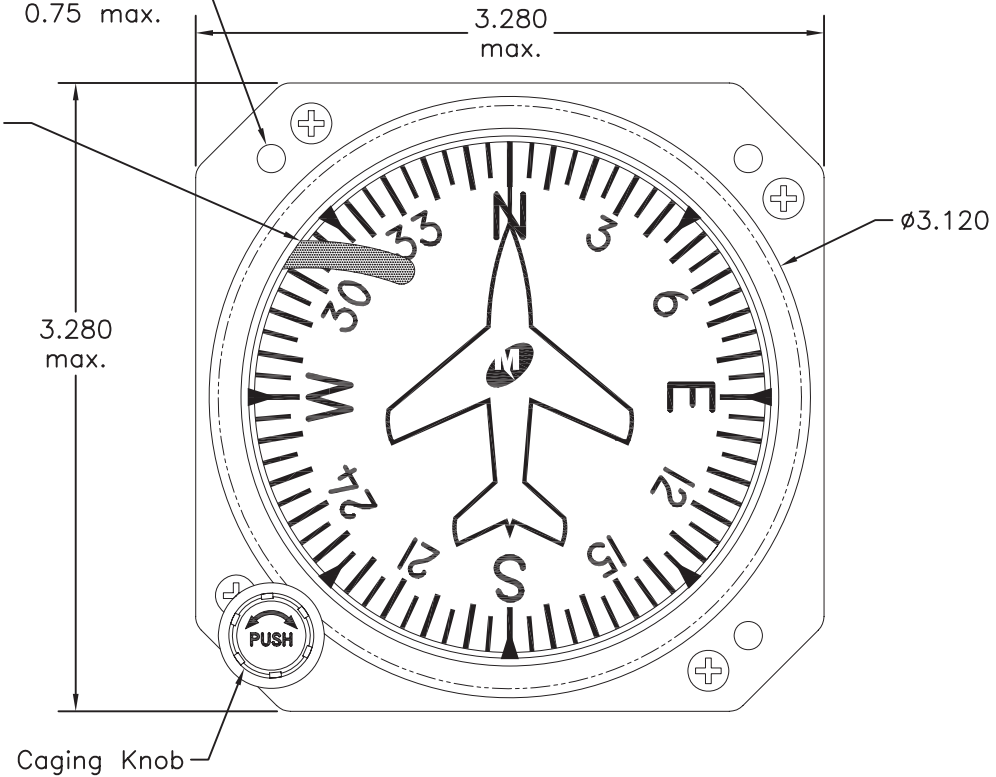
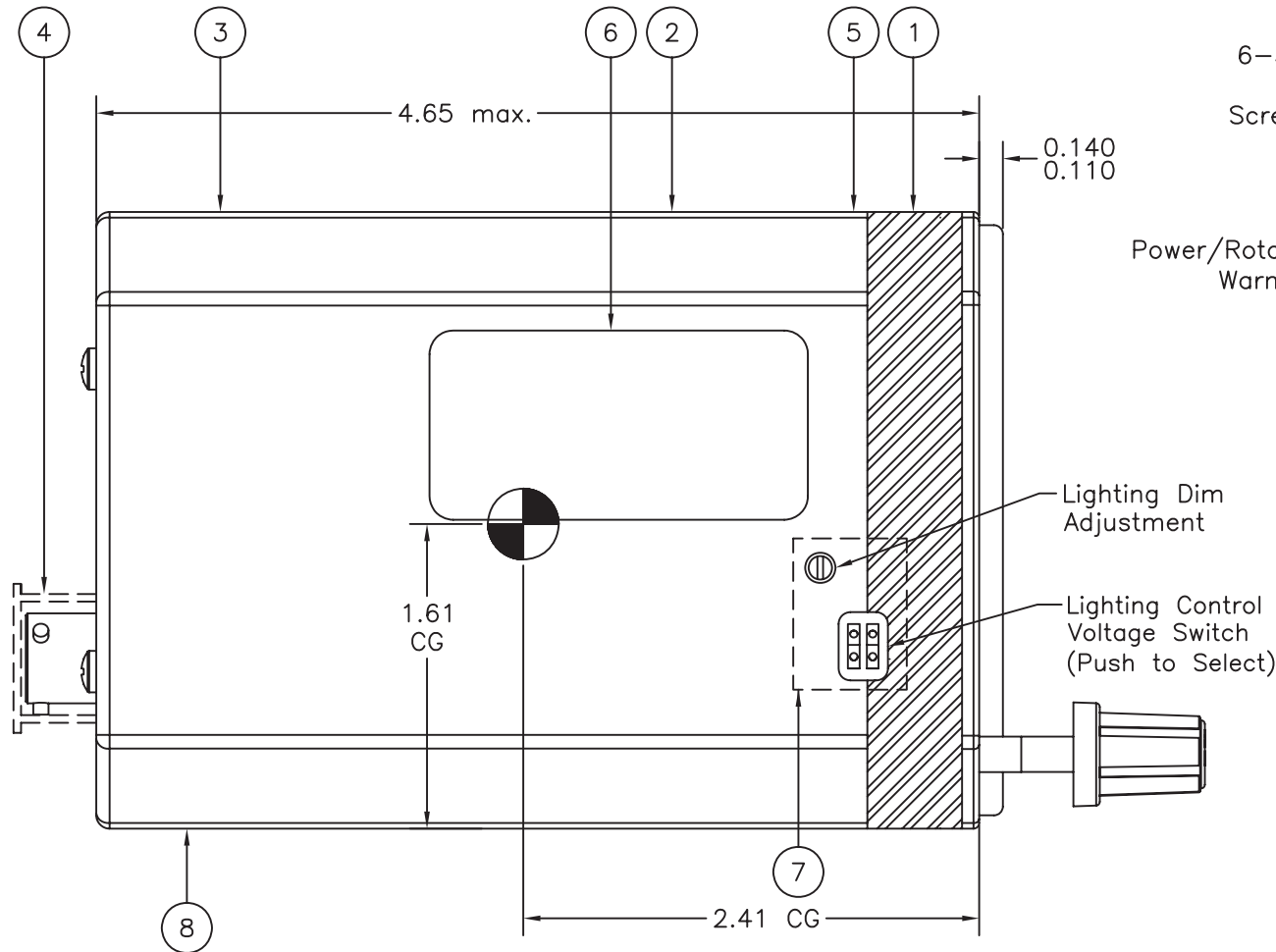
| Revisions |      |                                                                                                |          |          |
|-----------|------|------------------------------------------------------------------------------------------------|----------|----------|
| ECO       | Rev. | Description                                                                                    | Date     | Approved |
|           | A    | Production Release. P/N was 4305-210.                                                          | 1/25/07  | JBR/BAW  |
| 4811      | B    | Correct typo: Env. Cat Temp Variation "S2" was "C2".                                           | 2/27/07  | JBR/BAW  |
| 4943      | C    | Add -11 configuration. Revise pinout for internal lighting. Add Options and Hole Cover Decals. | 11/19/07 | MCH/BAW  |
| 4998      | D    | Change 8017212 to qty 1. Add TP471-().                                                         | 3/7/08   | MCH/JBR  |
| 5166      | E    | Delete Item 10, black tape, and change Item 7 configuration from 8017212 to 8017212-1.         | 2/25/09  | MKN/Sch  |

Logo and company name have been changed in title block only. No functional or technical changes have been made. Revision remains unchanged.

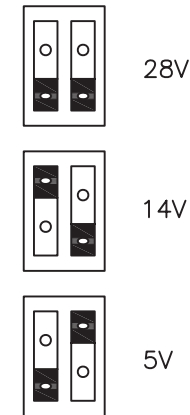


| Connector: MS3112E8-4P  |                         |
|-------------------------|-------------------------|
| -10 Configuration       | -11 Configuration       |
| A Ground (DC)           | A Ground (DC)           |
| B +10VDC to 32VDC Input | B Lighting Input        |
| C +10VDC to 32VDC Input | C +10VDC to 32VDC Input |
| D Reserved              | D Reserved              |

Supply power to pin B or C

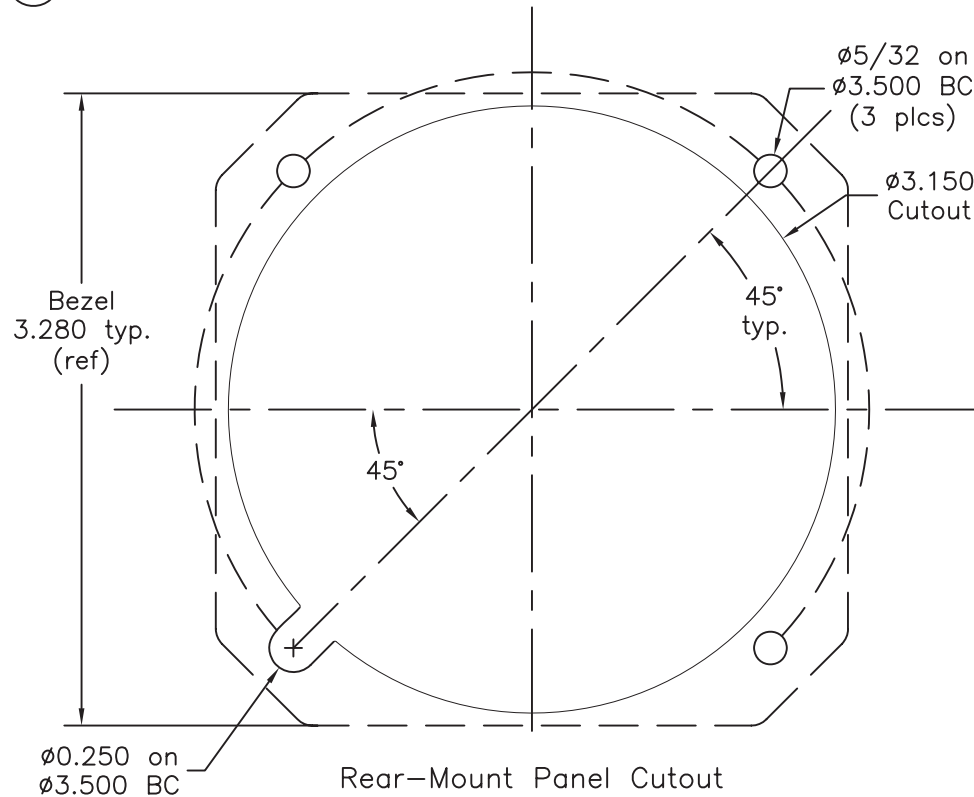


Lighting Control Switch Positions (3300-11 Only)



| Item | Qty | Part Number  | Description           |
|------|-----|--------------|-----------------------|
| 1    | A/R | 8017360      | Tape, Acetate         |
| 2    | 1   | 6018865      | Decal, Caution        |
| 3    | 1   | See Config.  | Nameplate             |
| 4    | 1   | 8012486-10YF | Cover, Connector      |
| 5    | 1   | 6018956      | Decal, Warranty       |
| 6    | 1   | See Config   | Decal, Options        |
| 7    | 1   | See Config   | Decal, Hole Cover     |
| 8    | 1   | See Config.  | Directional Gyro Assy |
| 9    | 1   | 9015514      | Mating Connector      |

| Specifications             |                                                                                                                     |
|----------------------------|---------------------------------------------------------------------------------------------------------------------|
| <b>Power Input</b>         | 10 to 32 VDC                                                                                                        |
| <b>Current Rating</b>      | At 13.75 VDC Start: 1.4A Max Run: 0.37-0.51A<br>At 27.5 VDC Start: 0.6A Max Run: 0.18-0.25A                         |
| <b>Lighting(-11 only)</b>  | Internal White LED. Lighting control voltage is selectable for 5V, 14V or 28V DC.                                   |
| <b>Weight</b>              | 3300-10: 1.9 lbs.      3300-11: 2.0 lbs.                                                                            |
| <b>MTBF</b>                | 2500 hours                                                                                                          |
| <b>Qualification Tests</b> | FAA TSO-C5e<br>RTCA DO-160E Environmental Category:<br>D1S2AER(B1)XXXXXXZZAZ[ZC][WW][M][A3C3X]XXAX                  |
| <b>Temperature</b>         | -40°C to +55°C Operating                                                                                            |
| <b>Altitude</b>            | +50,000 feet                                                                                                        |
| <b>Connector</b>           | MS3116E8-4P                                                                                                         |
| <b>Mating Connector</b>    | MS3116F8-4S or equivalent (P/N 9015514)                                                                             |
| <b>Color</b>               | Index Marks, Text, Symbolic Airplane, Logo: White<br>Bezel, Dial Background: Black<br>Power/Speed Warning Flag: Red |
| <b>Cover Glass</b>         | HEA (Anti-Reflective) Coated                                                                                        |



UNLESS OTHERWISE SPECIFIED, ALL DIMENSIONS ARE IN INCHES.  
TOLERANCE:  
FRACTIONAL=±1/64  
.XX=±0.015  
.XXX=±0.005  
.XXXX=±0.002  
ANGULAR=±0.5°  
CONCENTRICITY: 0.005 TIR  
BREAK ALL SHARP EDGES  
THREADS PER MIL-S-7742

DRAWN:  
J. Reed  
8/23/06  
APPROVED:  
BAW  
1/25/07

This document discloses proprietary information of Mid-Continent Instrument Co. It may be reproduced or disclosed only with written permission of Mid-Continent Instrument Co. and is not to be used in any way detrimental to the interests of Mid-Continent Instrument Co.

TITLE:  
**DIRECTIONAL GYRO**

**MidContinent**  
INSTRUMENTS+AVIONICS

PART NUMBER:  
**3300**

SCALE: None      DO NOT SCALE THIS DRAWING      SHEET 1 of 1